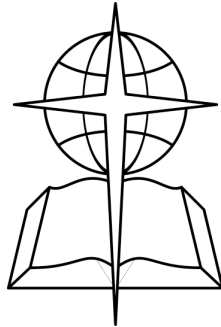
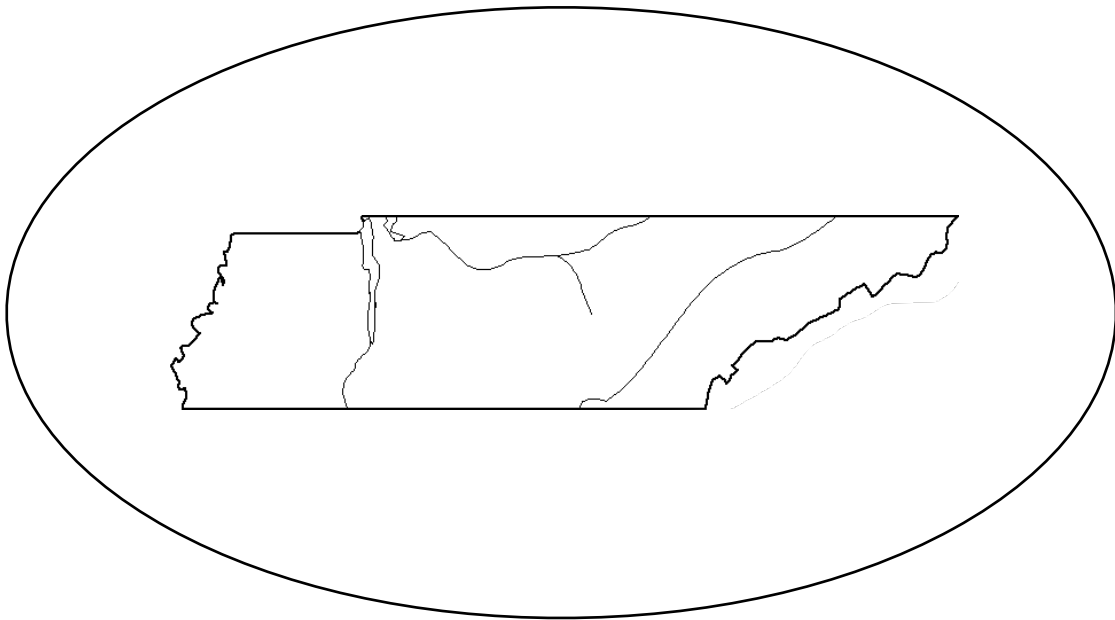


# TRUETT BAPTIST ASSOCIATION 2012



## 62ND ANNUAL SESSION



“FOR WE ARE LABOURERS TOGETHER WITH GOD...”  
1 CORINTHIANS 3:9

## TABLE OF CONTENTS

|   |       |
|---|-------|
| Program                                     | 1     |
| Annual Meeting Minutes                      | 2     |
| Mailing List of Churches                    | 3     |
| Tennessee Baptist Convention Report         | 4     |
| Tennessee Baptist Children's Home Report    | 5     |
| Union University Report                     | 6     |
| Tennessee Baptist Adult Homes Report        | 7     |
| Summary of Executive Board Actions          | 8     |
| Digest of Church Letters                    | 9     |
| Nominating Committee Report                 | 10    |
| Link-Up Covenant                            | 11    |
| Link-Up Diagram                             | 12    |
| Link-Up Treasurer's Report 2011-2012        | 13    |
| Link-Up Budget 2012-2013                    | 14    |
| Truett Treasurer's Report 2011-2012         | 15    |
| Truett Treasurer's Report 2012-2013         | 16    |
| Annual Scholarship Report                   | 17    |
| Annual WMU Report                           | 18-19 |
| Director of Missions Report                 | 20    |
| Tentative Calendar for 2013                 | 21-22 |
| Memorial Report                             | 23    |
| Constitution for Truett Baptist Association | 24-26 |
| Church Leadership Directory                 | 27-32 |

**62<sup>nd</sup> ANNUAL SESSION  
TRUETT ASSOCIATION OF MISSIONARY BAPTIST**

**Thursday, October 4, 2012  
First Baptist Church, Waverly**

- 6:00 SUPPER AND FELLOWSHIP**
- 6:45 DEVOTIONAL AND WELCOME BY DR. RICHARD BRAY**
- 7:00 CALL TO ORDER – MODERATOR DWAYNE SMITH**
- 7:05 TBC REPRESENTATIVE – BRO. DON PIERSON  
REPORTS FROM OTHER STATE BAPTIST INSTITUTIONS:  
CHILDREN HOME: DR. GERALD STOW  
UNION UNIVERSITY: DR. JAMES HUGGINS  
TENNESSEE BAPTIST ADULT HOMES: BRO. JIM HIGHLAND**
- 7:30 SUMMARY OF EXECUTIVE BOARD ACTIONS &  
DIGEST OF CHURCH LETTERS – GLEE SMITH**
- 7:35 NOMINATING COM. REPORT &  
LINKUP REPORT - NEAL WESTERMAN**
- 7:45 MISCELLANEOUS BUSINESS – MODERATOR DWAYNE SMITH**
- 7:55 TREASURER'S REPORT,  
BUDGET AND FINANCE COMMITTEE REPORT &  
ADOPTION OF BUDGET – CARMEN WESTERMAN**
- 8:10 MISSIONARY REPORT, RECOGNITION OF NEW PASTORS/  
STAFF & ADOPTION OF CALENDAR EVENTS - WILLIAM GRAY**
- 8:20 ORGANIZATIONAL REPORTS**
- 8:30 MEMORIAL SERVICE - GLEE SMITH**
- 8:35 SPECIAL MUSIC - HOST CHURCH**
- 8:40 MISSION CELEBRATION TESTIMONIES**

**ADJOURNMENT & DISMISSAL PRAYER**

**63<sup>rd</sup> Annual Meeting at  
*Slayden Baptist Church*  
Oct. 3, 2013**

**Truett Association  
62nd Annual Session  
October 4, 2012**

Bro. Richard Bray, Pastor of the Host Church, First Baptist Church Waverly, welcomed the congregation and led in a song, "Leaning on the Everlasting Arms." Bro. Bray then led in a devotional on Acts 13:1.

The Meeting was called to order by Moderator, Bro. Dwayne Smith, Pastor of Slayden Baptist Church. He opened the floor for reports.

**Tennessee Baptist Reports:**

Bro. Don Pierson gave a report from the TBC, which began with a video from the Executive Secretary/Treasurer Bro. Randy Davis. Bro. Pierson then spoke about Pastors and how church members should support them. After asking all pastors to stand, he had each member of the congregation gather around the pastors and lay hands on them and pray.

Children's Home Report was given by Bro. Gerald Stow.

Union University report was given by Dr. James Huggins.

Tennessee Baptist Adults Home report was given by Bro. Jim Highland.

Summary of Executive Board Actions & Digest of Church Letters were presented by Mrs. Glee Smith.

Nominating Committee Report & Link-Up Report was presented for approval by Bro. Neal Westerman. Seconded and Passed.

**Miscellaneous Business:**

The Budget Report was presented for approval by Mrs. Carmen Westerman. Seconded & passed. Mrs. Westerman also presented the Proposed Budget and the Scholarship Committee report for the upcoming year. Both were seconded & passed.

The Director of Missions report was given by Bro. William Gray and the Associate Director of Missions, Bro. Joe Shannon.

**Organizational Reports:**

The WMU report was given by Mrs. Carmen Westerman. Seconded & Passed.

The Memorial Service & Prayer was led by Mrs. Glee Smith.

Bro. Richard Bray led in a congregational song, "Uncloudy Day," and also sang special music. Bro. Gray officially introduced Bro. Bray as the newest pastor in our association. There were no other new pastors for the year.

Mission Celebration Testimonies were given by Bro. Joe Shannon on Ecuador, Bro Aaron Satchwill on Minnesota, Mrs. Kathy Jackson spoke on Disaster Relief, and Tommy Cheshire on Kenya.

Bro. Smith asked for a motion to adjourn. Seconded & passed.

Bro. Smith called the new Moderator, Bro. David Deavers, Pastor of Immanuel Baptist Church, to the platform. Bro. Devers dismissed in prayer.

Dwayne Smith, Moderator  
Glee Smith, Associational Clerk

**Buffalo Baptist Church**

358 Barren Hollow Road  
Hurricane Mills, TN 37078

**Pastor:**

Bro. Andy Plank  
6280 Piney River Rd  
Dickson, TN 37055  
Home: (931) 729-0821  
Cell: (931) 415-3752  
Email: [plankac@bellsouth.net](mailto:plankac@bellsouth.net)

**Cedar Grove Baptist Church**

1205 Dudley Ferry Loop  
Hurricane Mills, TN 37078

**Pastor:**

Bro. E.G. Mullinax  
337 Leader Dr.  
New Johnsonville, TN 37134  
Home: (931) 535-2894  
Cell: (931) 296-2492  
Email: [brobuddy@tds.net](mailto:brobuddy@tds.net)

**Immanuel Baptist Church**

P.O. Box 428  
McEwen, TN 37101

**Pastor:**

Bro. David Deavers  
P.O. Box 428  
McEwen, TN 37101  
Home: (931) 582-3029  
Work: (615) 789-9291  
Email: [IMAPEST@aol.com](mailto:IMAPEST@aol.com)

**Liberty Baptist Church**

P.O. Box 27  
White Bluff, TN 37187

**Pastor:**

Bro. Larry Cochran  
596 Tidwell Road  
Bon Aqua, TN 37025  
Home: (615) 412-6869  
Cell: (931) 797-5151  
Email: [cochran399@bellsouth.net](mailto:cochran399@bellsouth.net)

**McEwen First Baptist Church**

75 Long Street W.  
McEwen, TN 37101  
[www.mcewenfbc.com](http://www.mcewenfbc.com)

**Pastor:** No Pastor

**Oak Grove Baptist Church**

2182 Mt. Zion road  
McEwen, TN 37101

**Pastor:**

Reece Cochran  
1485 Mt. Zion Rd  
McEwen, TN 37101  
Home: (931) 582-3138

**Pomona Baptist Church**

974 Pomona Road  
Dickson, TN 37055  
[www.pomonabaptistchurch.com](http://www.pomonabaptistchurch.com)

**Pastor:**

Aaron D. Satchwill  
Home: (615) 446-3018  
Email: [preacher@pomonabaptistchurch.com](mailto:preacher@pomonabaptistchurch.com)

**Slayden Baptist Church**

3115 Slayden-Marion Road  
Cumberland Furnance, TN 37051

**Pastor:**

Bro. Dwayne Smith  
535 Old Highway 48  
Clarksville, TN 37040  
Home: (931) 801-8461

**Sylvia Baptist Church**

1415 Old Sylvia Road  
Dickson, TN 37055  
[www.sylviabaptist.com](http://www.sylviabaptist.com)

**Pastor:**

Clark Brown  
116 Beechwood Dr.  
Burns, TN 37029  
Home: (615) 446-2342  
Email: [arkbro@sylviabaptist.com](mailto:arkbro@sylviabaptist.com)

**Trace Creek Baptist Church**

1320 Broadway Avenue  
New Johnsonville, TN 37134  
[www.tracecreekbaptistchurch.com](http://www.tracecreekbaptistchurch.com)

**Pastor:**

Bro. Mark Warren  
Home: (931) 535-9840  
Church: (931) 535-2641  
Email: [tcbc@waverly.net](mailto:tcbc@waverly.net)

**Three Rivers Fellowship**

615 W. Main Street  
Waverly, TN 37185  
Mailing Address:  
P.O. Box 8067  
Waverly, TN 37185  
Church: (931) 209-9439

**United Missionary Baptist Church**

5261 Highway 70 West  
McEwen, TN 37101

**Pastor:**

L.J. Hatcher  
2631 Deer Creek Rd  
McEwen, TN 37101  
Home: (931) 582-3262  
Cell: (931) 622-1513  
Email: [jay\\_hatch@netzero.com](mailto:jay_hatch@netzero.com)

**Vanleer Baptist Church**

311 High Street  
Vanleer, TN 37181

**Pastor:**

Bro. Phil Corbin  
112 Payne Spring Rd  
Dickson, TN 37055  
Home: (615) 326-0132  
Cell: (615) 516-3211  
Email: [pcorbin@tennsco.net](mailto:pcorbin@tennsco.net)

**Waverly First Baptist Church**

300 Main Street  
Waverly, TN 37185  
(931) 296-2348  
[www.fbcwaverly.org](http://www.fbcwaverly.org)

**Pastor:**

Bro. Richard Bray  
Home:  
Cell:  
Email:

# Tennessee Missions And Ministry

## **A Year of Strategic Decisions**

This past year in the life of the Tennessee Baptist Convention, strategic decisions that impact our future have been made based on the Scriptural foundation found in

Eph 3:20-21:

<sup>20</sup> Now unto him that is able to do exceeding abundantly above all that we ask or think, according to the power that worketh in us, <sup>21</sup> Unto him be glory in the church by Christ Jesus throughout all ages, world without end. Amen.

The Vision 2021 Strategic Planning Team is near the completion of their work. It was exhilarating, encouraging, and edifying as Danny Sinquefield, Chairman of this blue-ribbon group of grassroots Tennessee Baptists; Fred Shackelford, TBC President; myself, and others on our team visited 19 cities in eight days early in the summer of 2012. The participation was far greater than expected and the results were incredibly helpful. Through surveys, focus groups and times of visiting hundreds of pastors and laymen over cups of coffee, we have heard very clearly that the priority of the day is to focus on reaching Tennessee for Jesus Christ as we continue to impact lostness around the globe.

## **Relocating of TBC Executive Board Offices**

In May of this year, an agreement was reached with Franklin Land Development to purchase the current offices at 5001 Maryland Way, Brentwood, Tennessee. This is one of those strategic decisions impacting our future. These offices have served Tennessee Baptists well since 1969; however, because ministry is done differently than it was 40 years ago, we need far less space. In order to align our fiscal resources to match our Great Commission strategic direction, we are downsizing our physical plant. The sale of a tool that has served us so well is simply a matter of being wise stewards as we prepare for the future.

## **A Focused Future**

The right alignment and wise stewardship of the resources God has placed in the hands of Tennessee Baptists will result in "fruit that remains." As the TBC Executive Board Missions and Ministries staff responds to the opportunities and needs of churches and associations, we will do so with excellence and a passion to impact the harvest fields known as Tennessee. Our focus is to assist our churches and associations in reaching, baptizing, and making disciples of more Tennesseans.

## **A Personal Word of Gratitude**

We are fortunate to be on this journey with Great Commission partners from the local church pastor and people to associational missions directors, and some of the greatest Christian entity leaders in North America. I want to thank and affirm Stephen Reynolds, President and CEO of Baptist Memorial Health Care System; Randall O'Brien, President of Carson-Newman College; Walter Grubb, President/Headmaster of Harrison-Chilhowee Academy; Kenny Cooper, President of Tennessee Baptist Adult Homes; Bryant Millsaps, President of Tennessee Baptist Children's Homes; Gary Coltharp, President of Tennessee Baptist Foundation; and David Dockery, President of Union University. Thank you for your friendship and your help over the last two years. I look forward to a fruitful future on this journey with all of you.

To God be the glory!

**Randy C. Davis, Executive Secretary-Treasurer**

## **Tennessee Baptist Children's Homes, Inc.**

During this year, your TBCH ministry has served approximately 200 children and their families through our residential care program. Additionally, 28 children have been led to a personal relationship with Jesus Christ, and 11 students were provided for as they pursued their college or post-secondary education.

We thank God for the way He impressed the hearts of 1,500 people who have volunteered to assist the 6 locations of the Children's Homes. There are many projects that would never be completed without the time and energy of these selfless volunteers.

The past few years have presented some real challenges to us as we have attempted to meet the needs of children and families in crisis. A decision was made many years ago that we would not accept government funds to underwrite this work.

We stand in need of your financial support now more than ever. We continue to trust God, working through His people, to meet our needs. We ask that you prayerfully consider your response to the Mother's Day Offering and the Cooperative Program.

As TBCH approaches the completion of 121 years of service to our Lord, we continue to follow the admonition contained in James 1:27 "Pure religion and undefiled before God and the Father is this, to visit the fatherless and widows in their affliction and to keep himself unspotted from the world." The needs are greater than ever before. Without your continued, faithful giving we will not be able to extend His hand of love to children that need the TBCH ministry during the coming year.

THANK YOU Tennessee Baptists for your prayers, your volunteer service, and your gifts. Together, we are making a difference for the Kingdom!

**Bryant Millsaps, President-Treasurer**

# Union University

We are a grateful community at Union University for the numerous ways that God has blessed the work of our hands during the 2011-12 academic year.

Union was pleased to invest the generous cooperative program gifts from the churches across the Tennessee Baptist Convention in the lives of more than 5,300 students who attended Union University during this past year. Many of the dollars went directly to provide scholarship assistance for students whose parents serve on the mission field, in local churches, and with denominational agencies.

We were pleased to welcome Todd Brady back to Union as Vice President for Church Relations.

Fred Shackelford, IV, TBC President, was one of dozens of outstanding speakers on the Union campus this past year.

Union responded to invitations from the IMB and NAMB to create a special masters program in Christian Studies for missionaries and bi-vocational pastors. We are honored to serve the Baptist family in this way.

Union continued to be recognized for high quality academics by *U.S. News and World Report* and numerous other publications.

Nearly 1,200 students graduated from Union University this past year, including the first graduating class from the fully accredited School of Pharmacy.

Union provided extensive leadership for the efforts to advance Christ-centered higher education through the publication of the volume on *Faith and Learning* (Baptist & Holman) and the multi-volume series on "Reclaiming the Christian Intellectual Tradition" (Crossway).

Several hundred students were involved in dozens of global mission opportunities, local church and para-church ministries, and community service efforts.

We are thankful for our long-standing partnership with the Tennessee Baptist Convention. We pray for God's ongoing blessings to rest on Union University as we seek to advance the cause of Christ-centered higher education in the Baptist tradition. We are grateful to the churches of the TBC and the friends of Union University across the state who provide prayer, encouragement, and support for our work, particularly for our students, staff, faculty and trustees.

**David S. Dockery, President**



## **Tennessee Baptist Adult Homes**

“Praise God, from whom all blessings flow....” Thus begins the *Doxology* sung by generations of Christians as part of their worship. We join in praising God for what he has done and continues to do in and through your Tennessee Baptist Adult Homes. Through God’s good blessings more than three hundred fifty special people are provided a home on one of seven Adult Homes campuses across the state. In addition, more than 285 intellectually disabled adults are provided a week of camp at either Carson Springs or Linden Valley Conference Centers through the Adult Homes ministry. Thanks be to God for his blessings and provisions.

“Thank you!” is another expression associated with this ministry to the elderly and intellectually disabled. Thanks to the prayers, encouragement, and financial support of God’s people called Tennessee Baptists, provision for these residents and campers is possible. Your gifts through your church to the Cooperative Program of the Tennessee Baptist Convention, the Father’s Day Offering, and the Golden Offering for Tennessee Missions are critical to the ongoing care and Christian witness provided through Tennessee Baptist Adult Homes. Sunday School classes, missions groups, and associations provide hands on help as well as provisions which help lessen the costs of operation. Again, thank you!

The importance of and need for the Adult Homes ministry is highlighted by the fact that there continues to be few vacancies and in many cases a waiting list of those desiring to become a resident. The 3-N-3 Initiative was begun in November focused on the group homes families, friends, and communities to raise \$300,000 over three years (thus, 3-N-3) to help offset the operating deficits at these homes. Over \$100,000 has been pledged and over \$80,000 already given. The Father’s Day Offering which also underwrites the group homes appears to be on target for meeting the \$315,000 goal for 2012. Baptist Health Care Center, Assisted Living, and Child Care Center continue to receive high ratings both with regulatory agencies and the community. Interest in the Williams Ferry Pointe independent living community is growing with many more inquiries and tours of the homes. And, certainly not least of all, the on-going quality and longevity of the staff speak to the ministry commitment these dedicated Christians have for the care of the residents.

We who partner with you in this ministry are incredibly blessed to serve our Lord by serving the elderly and those with intellectual disabilities. We are blessed by God’s watchcare and provisions through his people known as Tennessee Baptists. Indeed, we “Praise God from whom all blessings flow!”

**C. Kenny Cooper, President-Treasurer**

# **SUMMARY OF EXECUTIVE BOARD ACTIONS**

## **January 23, 2012**

Meeting was held with 8 churches represented, Buffalo, Cedar Grove, Immanuel, McEwen FBC, Oak Grove, Pomona, Slayden, & United Missionary.

Reports were given by the following committees: Scholarship, VBS, & WMU by Carmen Westerman. She challenged all churches to take up a love offering until the April 23rd meeting to go towards the WMU missionary house to be built in Mt. Juliet, TN. All monies donated will be given in Honor of Bro. William Gray's 20 years of service as our Associational Director of Missions.

DOM reports were given by Bro. William Gray & Bro. Joe Shannon.

There was no old or new business.

## **April 23, 2012**

Meeting was held with 12 churches represented, Buffalo, Cedar Grove, Immanuel, Liberty (White Bluff), McEwen FBC, Oak Grove, Pomona, Slayden, Sylvia, Trace Creek, Vanleer, & Waverly FBC.

Neal Westerman made a motion to cease all reports and business, except for the roll-call of churches, for the rest of the meeting due to the celebration of honoring Bro. William Gray's 20 years of service as the Truett Association Director of Missions.

As the roll-call of churches was announced each church was given the opportunity to present a love offering given by the church in honor of Bro. Gray. Each church was also allowed time to speak about Bro. Gray & the work he does for missions through our association and churches.

Of the 12 that were represented, 9 gave offerings totaling \$4065.50. All offerings will be donated in Bro. Gray's name to the Missionary House to be built in Mt. Juliet, Tennessee by the Tennessee WMU.

## **July 23, 2012**

Meeting was held with 10 churches represented, Buffalo, Cedar Grove, Immanuel, McEwen FBC, Oak Grove, Pomona, Slayden, Trace Creek, United Missionary, Waverly FBC.

Reports were given by the following committees: Advisory/Link-Up working on budget & calendar for upcoming year.

DOM reports were given by Bro. William Gray & Bro. Joe Shannon.

There was no old or new business.

| Churches             | Baptisms | Other Additions | Total Membership | Sunday School Enroll | Sunday School Average | VBS Enroll | D. T. Atten. | Music Enroll | WMU Enroll | Brotherhood Enroll | Total Receipts | Cooperative Program | Assoc. Missions | Total Missions Giving |
|----------------------|----------|-----------------|------------------|----------------------|-----------------------|------------|--------------|--------------|------------|--------------------|----------------|---------------------|-----------------|-----------------------|
| Buffalo              | 0        | 0               | 15               | 11                   | 13                    | 0          | 0            | 0            | 0          | 0                  | 10,286         | 720                 | 308             | 1,028                 |
| Cedar Grove          | 0        | 0               | 273              | 26                   | 26                    | 65         | 12           | 0            | 0          | 0                  | 85,376         | 5,532               | 5,532           | 12,796                |
| Immanuel             | 1        | 0               | 80               | 22                   | 15                    | 0          | 15           | 0            | 0          | 0                  | 60,797         | 4,600               | 3,400           | 15,200                |
| Liberty              | 15       | 4               | 120              | 56                   | 56                    | 85         | 0            | 10           | 0          | 10                 | 78,000         | 2,600               | 2,600           | 8,135                 |
| McEwen First         | 9        | 1               | 221              | 71                   | 5                     | 45         | 4            | 20           | 1          | 0                  | 106,557        | 7,201               | 2,377           | 8,572                 |
| Oak Grove            | 5        | 0               | 81               | 35                   | 21                    | 46         | 14           | 22           | 14         | 14                 | 39,842         | 3,585               | 1,494           | 8,779                 |
| Pomona               | 10       | 13              | 225              | 78                   | 39                    | 49         | 0            | 31           | 0          | 14                 | 106,552        | 5,059               | 5,059           | 12,816                |
| Slayden              | 13       | 3               | 304              | 73                   | 49                    | 118        | 40           | 0            | 51         | 40                 | 152,789        | 6,821               | 3,843           | 13,128                |
| Sylvia               | 28       | 12              | 715              | 217                  | 204                   | 255        | 82           | 51           | 104        | 55                 | 347,961        | 32,841              | 9,877           | 47,293                |
| Trace Creek          | 3        | 3               | 602              | 208                  | 120                   | 135        | 45           | 40           | 118        | 4                  | 364,783        | 42,043              | 8,409           | 91,842                |
| Three Rivers         | 1        | 18              | 19               | 22                   | 16                    | 12         | 0            | 3            | 0          | 0                  | 58,855         | 2,696               | 1,155           | 5,320                 |
| United Missionary    | 0        | 0               | 63               | 17                   | 12                    | 79         | 0            | 2            | 17         | 0                  | 37,482         | 3,748               | 1,012           | 6,931                 |
| Vanleer              | 0        | 0               | 26               | 10                   | 10                    | 0          | 0            | 0            | 0          | 0                  | 16,222         | 803                 | 803             | 1,606                 |
| Waverly First        | 12       | 14              | 523              | 262                  | 165                   | 116        | 20           | 60           | 36         | 15                 | 502,698        | 64,639              | 12,928          | 118,247               |
|                      |          |                 |                  |                      |                       |            |              |              |            |                    |                |                     |                 |                       |
| Associational Totals | 97       | 68              | 3,267            | 1,108                | 751                   | 1,005      | 232          | 239          | 341        | 152                | 1,968,200      | 182,888             | 58,797          | 351,693               |

# TRUETT BAPTIST ASSOCIATION

## PROPOSED OFFICERS & COMMITTEES 2012-2013

### **Director of Missions**

Bro. William Lee Gray  
P. O. Box 115  
Dover, Tennessee 37058  
931-232-8441 (O) 232-6602 (H)  
[william@jstba.com](mailto:william@jstba.com)

### **Moderator**

Bro. David Deavers  
P.O. Box 428  
McEwen, TN 37101  
Home: (931) 582-3029  
Work: (615) 789-9291  
Email: [IMAPEST@aol.com](mailto:IMAPEST@aol.com)

### **Vice Moderator**

Bro. Andy Plank  
6280 Piney River Road  
Dickson, TN. 37055  
(931) 729-0821 Home  
(615) 415-3752 Cell

### **Clerk**

Glee Smith  
535 Old Highway 48  
Clarksville, TN 37040  
(931) 320-0139 cell

### **Treasurer**

Mrs. Carmen Westerman  
680 Tucker Road  
Dickson, TN 37055  
(615) 789-5630  
[CARMENWESTERMAN@GMAIL.COM](mailto:CARMENWESTERMAN@GMAIL.COM)

### **Sunday School Director**

Ronald Harned

### **Discipleship Training Dir.**

Dan Hicks  
111 Cedar View Drive  
Charlotte, TN 37036  
615-789-6342  
[Dan.Hicks@Nemak.com](mailto:Dan.Hicks@Nemak.com)

### **Brotherhood/R. A. Director**

### **Director of Evangelism**

Bro. Dwayne Smith  
535 Old Highway 48  
Clarksville, TN 37040  
(931) 801-8461 Cell

### **Advisory Council**

Moderator  
Vice Moderator – Alternate  
Neal Westerman

### **Area Program Committee**

Moderator, Vice Mod. & Clerk

### **V.B.S. Committee**

Penny Norville, Chr.  
Liane Keaton  
Barabara Ellis  
Diana Stephens

### **Bi-Vocational Coordinator**

Bro. Andy Plank

### **Associational Music Director**

Bro. Andy Plank  
6280 Piney River Road  
Dickson, TN. 37055  
(931) 729-0821 Home  
(615) 415-3752 Cell

### **W.M.U. Director**

Carmen Westerman  
680 Tucker Road  
Dickson, TN 37055  
(615) 789-5630

### **Missions Growth Catalyst**

### **Women on Mission**

**Consultant**  
Tammy Saffel

### **Youth & Children Consultant**

Lisa Williams

### **Budget & Finance**

Bro. David Deavers, Chr.  
Rita Luther  
Carmen Westerman  
Donnie Weiss  
L. M. Sceals

### **Doctrine & Credentials**

Bro. Clark Brown, Chr.  
Larry Cochran  
Bro. James Ellis  
Bro. E. G. Mullinax  
Phil Saffel

### **Missions**

Bro. L.J. Hatcher, Chr.  
Linda McMurtry  
Carmen Westerman

### **Nominating**

Neal Westerman, Chr.  
Mrs. Glee Smith  
Danny Jackson  
Bro. E. G. Mullinax  
Bro. Richard Bray

### **Continual Education**

Bro. Mark Warren, Chairman  
Bro. David Deavers Dir/Reg  
Bro. Clark Brown, Pro. Dir.

### **Youth**

James Tate, Chr.  
Tom Jehnzen  
David Davidson

### **Fellowship**

Kathleen M. Lee Chr.  
Bro. Reece Cochran  
Bro. E. G. Mullinax

### **Program**

Director of Missions  
Moderator  
Clerk

### **Scholarship**

Moderator  
Mark Warren  
Ida Sue Westerman

### **Disaster Relief Team**

Bob Jackson  
Kathy Jackson  
Kathleen M. Lee  
Danny Jackson  
Wayne Wood  
Bill Lowe

**LINK UP COVENANT BETWEEN**  
**JUDSON BAPTIST ASSOCIATION**  
**STEWART CO. BAPTIST ASSOCIATION**  
**TRUETT BAPTIST ASSOCIATION**

**We, Judson Baptist Association, Stewart Baptist Association and Truett Baptist Association (hereafter called “The Associations”)** covenant to link-up together to reach the lost in our area through cooperation, maximizing resources, minimizing meetings and empowering decision-makers to impact the Kingdom of God.

**We, The Associations, covenant** to jointly fund a Director of Missions (hereafter called “DOM”) and staff through individual and joint budgets with all funds for DOM and staff administered through the Truett Baptist Association Treasurer.

**We, the Associations, covenant** to maintain an advisory committee consisting of the moderator of each association and one member from each association elected by each Executive Board to coordinate between the individual Executive Boards, the DOM, the Tennessee Baptist Convention (TBC) and the North American Mission Board (NAMB).

**We, the Associations, covenant** to work through the Advisory Committee to establish a job description for the DOM and staff, monitor performance, access financial, physical and spiritual needs of the DOM and staff.

**We, the Associations, covenant** to establish an Area Program Committee to work with the DOM to coordinate all joint meetings and training. The Area Program Committee shall consist of two members from each association selected by the Nominating Committee of each association and elected at the Annual Business Meeting of each association. The initial Area Program Committee shall be elected by the Executive Board’s of each association.

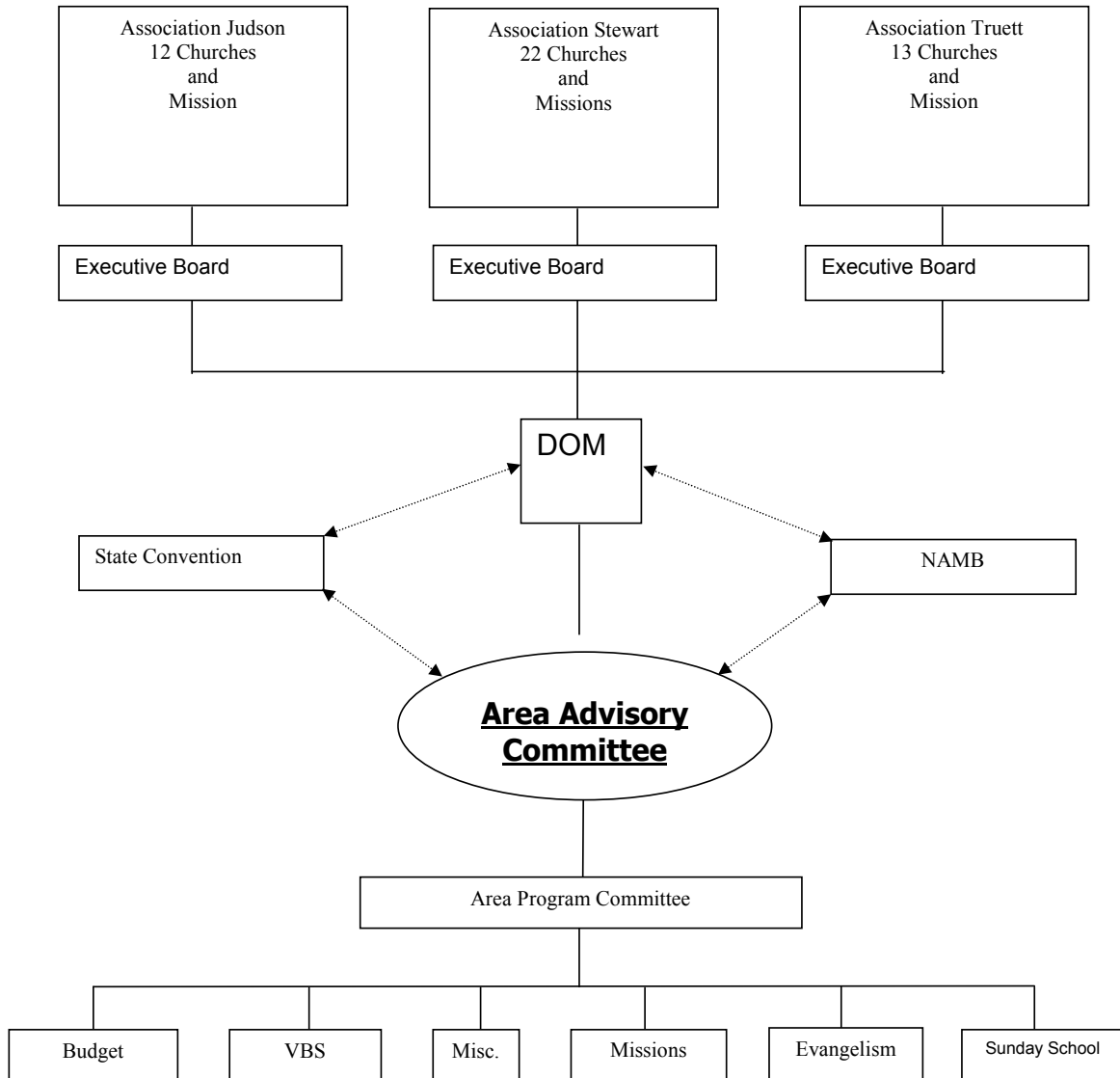
**We, the Associations, covenant** to have joint training, conferences, clinics, workshops, etc. for Vacation Bible School, WMU, Brotherhood, Missions, Evangelism, Sunday School and Budget, with DOM determining additional training needs in specific geographical areas.

**We, the Associations, covenant** to strive to within two years have a joint Annual Meeting for TBC/SBC reports and Link-up business with separate Annual Business Meetings for each Association.

## Strength Through Link-Up

**"...a threefold cord is not quickly broken."**

*Ecclesiastes 4:12*



This model allows for maximizing of resources, minimizing of meetings, and empowering decision-makers to impact the Kingdom of God.

**THE ASSOCIATIONS  
LINK-UP BUDGET REPORT  
August-12**

|                           | <b>THIS<br/>YEAR'S<br/>BUDGET</b> | <b>THIS<br/>MONTH'S<br/>EXPENSES</b> | <b>EXPENSES<br/>TO<br/>DATE</b> | <b>BUDGET<br/>AMOUNT<br/>REMAINING</b> |
|---------------------------|-----------------------------------|--------------------------------------|---------------------------------|--|
| 1 DOM Salary & Allowances | \$ 51,000.00                      | \$ 4,250.00                          | \$ 51,000.00                    | \$ -                                   |
| 2 DOM expense reimb.      | 26,400.00                         | 2,225.67                             | 26,395.49                       | 4.51                                   |
| 3 DOM Insurance           | 14,100.00                         | 1,268.19                             | 14,905.95                       | (805.95)                               |
| 4 TBC Supplement for DOM  | 12,084.00                         | 1,007.00                             | 12,084.00                       | -                                      |
| 5 Support Salary          | 21,000.00                         | 1,750.00                             | 21,000.00                       | -                                      |
| 6 Support Expenses        | 2,400.00                          | 478.52                               | 511.52                          | 1,888.48                               |
| 7 TBC Support Replacement | 2,500.00                          | 2,500.00                             | 2,500.00                        | -                                      |
| 8 Office Expense          | 1,500.00                          | -                                    | 1,474.77                        | 25.23                                  |
| 9 Liability Insurance     | 325.00                            | -                                    | -                               | 325.00                                 |
| 10 DOM Retirement         | 10,200.00                         | 850.00                               | 10,200.00                       | -                                      |
| 11 DOM Medical IRA        | 2,700.00                          | 450.00                               | 2,700.00                        | -                                      |
| 12 Staff Christmas Gift   | 2,550.00                          | -                                    | 2,550.00                        | -                                      |
| 13 Staff Mission Expenses | 2,200.00                          | -                                    | 2,200.00                        | -                                      |
| 14 R. G. Lee Center       | 1,400.00                          | -                                    | 700.00                          | 700.00                                 |
| 15 Miscellaneous          | 60.00                             | -                                    | -                               | 60.00                                  |
| 16 Reimbursed Expense     | -                                 | -                                    | 157.61                          | (157.61)                               |
| <b>TOTALS</b>             | <b>\$ 150,419.00</b>              | <b>\$ 14,779.38</b>                  | <b>\$ 148,379.34</b>            | <b>\$ 2,039.66</b>                     |

**RECEIPTS**

|                         |      |                     |                      |
|-------------------------|------|---------------------|----------------------|
| JUDSON ASSOCIATION      | 747  | 1,509.00            | \$ 19,210.00         |
| STEWART CO. ASSOCIATION | 2622 | 3,350.00            | 40,200.00            |
| TRUETT ASSOCIATION      | 1109 | 4,600.00            | 55,200.00            |
| JUDSON TBC SUPPORT      | 747  | 1,000.00            | 11,000.00            |
| STEWART TBC SUPPORT     | 2621 | 1,757.10            | 21,085.20            |
| OTHER INCOME            |      | 75.02               | 822.36               |
| <b>TOTAL RECEIPTS</b>   |      | <b>\$ 12,291.12</b> | <b>\$ 147,517.56</b> |

BEGINNING BALANCE \$ 39,608.63

**ENDING BALANCE \$ 37,120.37**

**JUDSON - STEWART COUNTY- TRUETT BAPTIST ASSOCIATIONS**

**LINK-UP BUDGET 2012 -2013**

|                           | <b><u>TOTALS</u></b> |
|---------------------------|----------------------|
| <b>MISSIONS STAFF:</b>    |                      |
| 1 DOM Salary & Allowances | \$ 51,000.00         |
| 2 DOM expense reimb.      | 26,400.00            |
| 3 DOM Insurance           | 16,120.00            |
| 4 TBC Supplement for DOM  | 12,084.00            |
| 5 Support Salary          | 21,000.00            |
| 6 Support Expenses        | 2,400.00             |
| 7 TBC Support Replacement | 2,500.00             |
| 8 Office Expense          | 1,500.00             |
| 9 Liability Insurance     | 325.00               |
| 10 DOM Retirement         | 10,200.00            |
| 11 DOM Medical IRA        | 2,700.00             |
| 12 Staff Christmas Gift   | 2,550.00             |
| 13 Staff Mission Expenses | 5,000.00             |
| 14 RG Lee Center          | 1,400.00             |
| 15 Miscellaneous          | 60.00                |
| 16 Reimbursed Expense     | -                    |
| <b>TOTALS:</b>            | <b>\$ 155,239.00</b> |

**REVENUES**

|                         |                      |
|-------------------------|----------------------|
| JUDSON ASSOCIATION      | \$ 20,018.00         |
| STEWART CO. ASSOCIATION | 43,700.00            |
| TRUETT ASSOCIATION      | 55,200.00            |
| JUDSON TBC SUPPORT      | 12,000.00            |
| STEWART TBC SUPPORT     | 21,085.20            |
| OTHER INCOME            | -                    |
| <b>TOTALS:</b>          | <b>\$ 152,003.20</b> |



| TRUETT ASSOCIATION BUDGET REPORT        |                          |                               |                        |                               |
|---|--------------------------|-------------------------------|------------------------|-------------------------------|
| FOURTH QUARTER<br>June, July, August 12 | THIS<br>YEAR'S<br>BUDGET | THIS<br>QUARTER'S<br>EXPENSES | EXPENSES<br>TO<br>DATE | BUDGET<br>AMOUNT<br>REMAINING |
| 1 DOM Staff                             | \$ 55,200.00             | \$ 13,800.00                  | \$ 55,200.00           | \$ -                          |
| 2 DOM Appreciation Bonus                | 1,000.00                 | 1,000.00                      | 1,000.00               | -                             |
| 3 Annual Meeting                        | 200.00                   | -                             | 141.99                 | 58.01                         |
| 4 Associational Clerk                   | 500.00                   | -                             | 100.00                 | 400.00                        |
| 5 Associational Treasurer               | 800.00                   | -                             | -                      | 800.00                        |
| 6 Bi-vocational Ministry                | 125.00                   | -                             | -                      | 125.00                        |
| 7 Brotherhood                           | -                        | -                             | -                      | -                             |
| 8 Departmental Spending                 | 150.00                   | -                             | -                      | 150.00                        |
| 9 Evangelism                            | 125.00                   | -                             | -                      | 125.00                        |
| 10 Insurance                            | -                        | -                             | -                      | -                             |
| 11 Media Material                       | -                        | -                             | -                      | -                             |
| 12 Mission Committee                    | 250.00                   | -                             | -                      | 250.00                        |
| 13 Music                                | -                        | -                             | -                      | -                             |
| 14 Office Supplies & Postage            | 50.00                    | -                             | 77.29                  | (27.29)                       |
| 15 Pastor Fellowship                    | 1,000.00                 | -                             | 762.20                 | 237.80                        |
| 16 Scholarship Fund                     | 1,200.00                 | -                             | 1,000.00               | 200.00                        |
| 17 Disaster Relief                      | 500.00                   | -                             | -                      | 500.00                        |
| 18 Vacation Bible School                | 400.00                   | -                             | 281.78                 | 118.22                        |
| 19 Woman's Missionary Union             | 500.00                   | -                             | 276.34                 | 223.66                        |
| 20 Reimbursed                           | -                        | 850.00                        | 5,828.61               | (5,828.61)                    |
| 21 Counseling                           | 1,200.00                 | 100.00                        | 675.00                 | 525.00                        |
| <b>TOTAL</b>                            | <b>\$ 63,200.00</b>      | <b>\$ 15,750.00</b>           | <b>\$ 65,343.21</b>    | <b>\$ (2,143.21)</b>          |
| <b>RECEIPTS</b>                         |                          | <b>THIS QUARTER</b>           | <b>TO DATE</b>         |                               |
| Buffalo                                 |                          | \$ 199.61                     | \$ 336.61              |                               |
| Cedar Grove                             |                          | 1,446.30                      | 6,049.30               |                               |
| Immanuel                                |                          | 900.00                        | 3,550.00               |                               |
| Liberty                                 |                          | 1,135.90                      | 2,879.11               |                               |
| McEwen First                            |                          | 603.78                        | 2,829.21               |                               |
| Oak Grove                               |                          | 439.00                        | 1,986.00               |                               |
| Pomona                                  |                          | 1,275.32                      | 5,058.95               |                               |
| Slayden                                 |                          | 1,180.33                      | 5,335.26               |                               |
| Sylvia                                  |                          | 2,431.00                      | 9,852.60               |                               |
| Tenn Baptist Convention                 |                          | -                             | -                      |                               |
| Trace Creek                             |                          | 2,722.48                      | 9,716.82               |                               |
| United Missionary                       |                          | 231.55                        | 1,021.55               |                               |
| Vanleer                                 |                          | 225.00                        | 1,003.36               |                               |
| Waverly First                           |                          | 3,157.84                      | 12,636.83              |                               |
| Other                                   |                          | 2,192.11                      | 3,056.54               |                               |
| Interest                                |                          | 101.16                        | 101.16                 |                               |
| <b>TOTAL RECEIPTS</b>                   |                          | <b>\$ 18,241.38</b>           | <b>\$ 65,413.30</b>    |                               |
| <b>BEGINNING BALANCE</b>                | <b>\$19,472.47</b>       |                               |                        |                               |
| <b>ENDING BALANCE</b>                   | <b>\$21,963.85</b>       |                               |                        |                               |

## TRUETT ASSOCIATION BUDGET

|                              | 2011-2012<br>CURRENT<br>BUDGET | PROPOSED<br>2012-2013<br>BUDGET |
|------------------------------|--------------------------------|---------------------------------|
| 1 DOM Staff                  | 55,200.00                      | \$55,200.00                     |
| 2 DOM Appreciation Bonus     | 1,000.00                       | 1,000.00                        |
| 3 Annual Meeting             | 200.00                         | 150.00                          |
| 4 Associational Clerk        | 500.00                         | 500.00                          |
| 5 Associational Treasurer    | 800.00                         | 800.00                          |
| 6 Bi-vocational Ministry     | 125.00                         | 25.00                           |
| 7 Brotherhood                | -                              | -                               |
| 8 Departmental Spending      | 150.00                         | 25.00                           |
| 9 Evangelism                 | 125.00                         | 25.00                           |
| 10 Insurance                 | -                              | -                               |
| 11 Media Material            | -                              | -                               |
| 12 Mission Committee         | 250.00                         | 25.00                           |
| 13 Music                     | -                              | -                               |
| 14 Office Supplies & Postage | 50.00                          | 100.00                          |
| 15 Pastor Fellowship         | 1,000.00                       | 800.00                          |
| 16 Scholarship Fund          | 1,200.00                       | -                               |
| 17 Disaster Relief           | 500.00                         | 100.00                          |
| 18 Vacation Bible School     | 400.00                         | 300.00                          |
| 19 Woman's Missionary Union  | 500.00                         | 400.00                          |
| 20 Reimbursed                | -                              | -                               |
| 21 Counseling                | <u>1,200.00</u>                | <u>1,000.00</u>                 |
| <b>TOTAL</b>                 | <b>\$ 63,200.00</b>            | <b>\$ 60,450.00</b>             |

# TRUETT ASSOCIATION ANNUAL SCHOLARSHIP REPORT 2011-2012

## 2011-12 Scholarships Expenditures: \$2200

|                 |                 |                |
|-----------------|-----------------|----------------|
| Brandon Brewer  | Trace Creek     | MTSU           |
| Alyssa Dugger   | Trace Creek     | TTU            |
| James Fisher    | McEwen FBC      | Belmont        |
| James R. Keaton | Sylvia Baptist  | Union          |
| Tricia Jo Potts | Slayden Baptist | Austin Peay    |
| Katie Prince    | Trace Creek     | Blue Mnt. Col. |
| Cody Saffel     | Trace Creek     | MTSU           |

## 2012-13 Recipients :

|                 |                 |                |
|-----------------|-----------------|----------------|
| Brooke Cole     | Sylvia Baptist  | Union          |
| James R. Keaton | Sylvia Baptist  | Union          |
| Tricia Potts    | Slayden Baptist | Austin Peay    |
| Katie Prince    | Trace Creek     | Blue Mnt. Col. |

## Fall August 8,2011 – Expenditures \$800

**Total Scholarship Expenditure \$3000.00**

## 2013 Fall applications due by June 15, 2013!!!!!!!!!!!!!!!!!!!!

Applicants must be **Full Time Students and maintain a "2.5" overall GPA**. All future and Repeat applicants must submit a complete application form with references from college pastor or church pastor to show continued church involvement. For more information contact Carmen Westerman...615-789-5630

## **2011-2012 WMU Report**

Thank God for His blessings and for every church in the Truett Association! This year began with many representatives serving in our State leadership positions as Tammy Saffel was our State WMU President and Brooke Cole served as an Acteen Panelist. Carmen Westerman is now serving as the Middle Tn. Vice-president for the 2012-13 term. We thank God for our DOM, William Gray and Bro. Joe Shannon as they serve within our Association and Linkup and for making trips beyond our Tennessee borders. These are exciting times for us to be a part of missions as we prepare for our Savior's return. **Missions is for everyone.**

### **WMU missions promotions within our Truett Association:**

**Nov. 2011-** Foreign Missions Study for GA and RA @ Sylvia Baptist Church led by Sylvia Youth..

**Dec. 2011** – Foreign Missions Week of Prayer @ Trace Creek Baptist Church with Study, Prayer, food and fellowship.

**Dec. 2011-** Birthday and Christmas Gift Card to **Truett's MK, Zak Lyons**, a student at Union University. He was our MK. Zac graduated and sent a sweet thank you note for our remembrances of him. We have not received the name of our new MK yet.

**March 2012** – Connection and Get Together in Gatlinburg:

**(1)** Truett Association donated to the Silent Auction sponsored by Sylvia Acteens. The money went to support the Mission House to be built in Mt. Juliet. Tn.

**(2)** WMU sponsored a pizza night for the Acteens that went to Connection. If your Acteens are going to the Connection this next spring, please let Mrs. Carmen or Lisa Williams know so they can be included in a special night together.

**(3)Truett Association thanks Bro. Gray for a great fun night to celebrate his and Mrs. Linda's years of service and raise funds and awareness for the Tennessee WMU sponsored Missionary House in Mt. Juliet.** A great turn out and McEwen FBC was a great host! (All total for the house Tn. WMU reports that we have raised about 2/3 of the needed funds to break ground and complete it.) Thanks for your part and let us keep on till the job is done!

**Plan to attend or support these events for 2012-13:**

**R.A.Camporee:** Linden Valley Conference Center. Information online.

**G.A. Jam:** in Oct. go online to WMU for info

**Baptist Women's World Day of Prayer:** ([www.bwawd.org](http://www.bwawd.org).)

**Missions Extravaganza**

**Foreign Mission Study:** Wed., Nov. 2, 2012 -A fun time for Girls and Boys in Grades 1-6. Sylvia Baptist Church. Plan to come and bring your children.

**Day of Prayer for Foreign Missions:** First Tuesday in Dec. @ Trace Creek Baptist Church . Refreshments will be provided by the Ladies of Trace Creek.

Jan. 10, 2013-WMU Scholarship applications must be postmarked by this date!

Feb. 2013- National Children's Ministry Day, "Operation education"

February: WMU Baby Quilting: If you want to sponsor this event , please contact Carmen Westerman 615-789-5630!

**Women's Get Together and Connection** – Gatlinburg. Info online

September: Ladies Prayer Retreat. Info. online.

Also, if you have an idea for Association missions, Call Carmen! 615-789-5630!  
Let's work till Jesus Comes!

Please help support the Mission House in Mt. Juliet. To raise money. I hear our WMU president has challenged a couple of men at the TN. Baptist Convention in a RA racer rally. Go WMU!

# ASSOCIATIONAL DIRECTOR OF MISSIONS REPORT

## 2011-2012

|  |        |
|--|--------|
| Miles Travels.....   | 32,529 |
| Messages Preached.....                                       | 138    |
| Revivals Held.....   | 9      |
| Revivals attended within the associations.....               | 30     |
| Associational Mtgs. / Committee Mtgs. attended.....          | 142    |
| Associational Executive Board meetings attended.....         | 9      |
| Ministerial meetings attended.....                           | 10     |
| Good Samaritans Meeting attended.....                        | 52     |
| State and S.B.C. meetings.....                               | 28     |
| Annual Associational Meetings Judson, Stewart Co. and Truett |        |
| Tenn. Baptist Convention                                     |        |
| Attended SBC   |        |
| Served as Chaplain at Campgrounds, 1 week                    |        |
| Participated in 13 Ordination services                       |        |
| Attended Staff Sharing Conference for 3 days                 |        |
| Attended Associational Leadership Conference                 |        |
| Area Wide Crusade planning and attendance in Stewart         |        |
| Worked with the New Missions                                 |        |
| Mission Trip – El Salvador and Ecuador                       |        |



William Lee Gray, DOM

## 2013 CALENDAR OF EVENTS

### January

#### JUDSON

- 14: Council Mtg. @ Assoc. Office, 7pm  
19: Executive Board Mtg. @ Assoc. Building  
Breakfast, Baptist Men, 8am & Mtg, 9am

#### STEWART

- 13: Exec. Board Mtg @ Yellow Creek, 2:30 pm  
14: Prayer Coord. Mtg. @ 9:00 am  
19: Brotherhood Wild Game Supper @  
Walnut Grove BC, 6pm

#### TRUETT

- 28: Executive Board Meeting @  
FBC McEwen, Meal 6pm; Meeting 7 pm

#### Linkup and Cluster

- 3-11: Ecuador Mission Trip  
19: Advisory Council Mtg. @  
The Westerman's

#### SBC and TBC

- 2-6: January Bible Study  
20: Sanctity of Human Life Sunday  
27: Day of Prayer for the SBC

### February

#### JUDSON

- 3: Assoc. Evangelism Conf. @ ? BC  
16: ? Disaster Relief Benefit @  
Parker Creek BC (Chili Supper/Singing)

#### STEWART

- 11: Prayer Coordinator @ 9 am  
20: Assoc. Evangelism Conf. @ FBC, Dover

#### TRUETT

#### Linkup and Cluster

#### SBC and TBC

- 10: Racial Reconciliation Sunday  
11-17: Focus on WMU

### March

#### JUDSON

#### STEWART

- 11: Prayer Coordinator, 9 am  
31: ? VBS Directors Mtg. @  
Big Rock BC, 1:30 pm ?

#### TRUETT

#### Linkup and Cluster

- 25: Secretary Conference @ Judson Assoc.  
28-Apr. 4: Ecuador Mission Trip

#### SBC and TBC

- 1-2: Youth Evangelism Conference, Nashville  
3-10: Week of Prayer: North America Missions  
Annie Armstrong Easter Offering  
17: Substance Abuse Sunday

### April

#### JUDSON

- 8: Council Mtg. @ Assoc. Office, 7 pm  
20: Executive Board Mtg @ Assoc. Building,  
Breakfast 8am; Meeting 9am

#### STEWART

- 13: Exec. Board Mtg @ Bear Spring  
Meal, 8am; Meeting, 9am  
15: Prayer Coordinator, 9 am

#### TRUETT

- 22: Executive Board Meeting @ FBC McEwen  
Meal 6 pm; Meeting 7 pm

#### Linkup and Cluster

- ?: El Salvador Mission Trip  
20: Advisory Council Mtg. @  
Westerman's, noon  
27: Joint VBS Clinic @ ?? 9 am—12:30 pm ???

#### SBC and TBC

- 14: Cooperative Program Sunday  
14-19: Baptist Doctrine Sunday

### May

#### JUDSON

#### STEWART

- 19: VBS Clinic @ Big Rock BC  
20: Prayer Coordinator Mtg., 9:00 am

#### TRUETT

#### Linkup and Cluster

- 29-June 5: Ecuador Mission Trip

#### SBC and TBC

#### Associational Missions Emphasis Month

- 2: National Day of Prayer  
5: Senior Adult Sunday

### June

#### JUDSON

#### STEWART

- 15-22: Mission Trip to Bozeman, Montana  
17: Pray Coord. Mtg, 9 am

#### TRUETT

#### Linkup and Cluster

#### SBC and TBC

- 9-10: SBC Pastors Conference, Houston, TX  
11-12: SBC Annual Meeting, Houston, TX

### July

#### JUDSON

8: Assoc. Council Mtg. @ Assoc. Office, 7pm  
20: Executive Board Mtg @ Assoc. Office, 7pm  
28: ?Evangelism Rally

#### STEWART

7-10: Crusade?  
14: Exec. Board Mtg @ Petra BC, 2:30 pm  
15-19: Mad Week  
15: Prayer Coord. Mtg., 9am

#### TRUETT

22: Executive Board Meeting @ FBC McEwen,  
Meal 6 pm; Meeting 7 pm  
Nominating, Budget, Program Mtg. (Meal)

#### Linkup and Cluster

20: Link-up (Budget and Planning Mtg.)  
12:00 pm @ The Westerman's

#### SBC and TBC

### August

#### JUDSON

#### STEWART

12: Prayer Coordinator Mtg., 9 am

#### TRUETT

#### Linkup and Cluster

12-19: Ecuador Mission Trip

#### SBC and TBC

### September

#### JUDSON

#### STEWART

16: Prayer Coordinator Mtg. @ 9 am  
16: ACP Deadline

#### TRUETT

15: ACP Deadline

#### Linkup and Cluster

#### SBC and TBC

8-15: Week of Prayer: State Missions  
Golden Offering

### October

#### JUDSON

Pastor/Staff Appreciation Month

1: ACP Deadline

19: Annual Meeting @ Maple Grove BC

#### STEWART

15: Prayer Coordinator Mtg., 9 am

17: Annual Meeting @ TBD

#### TRUETT

3: Annual Meeting @ Slayden

#### Linkup and Cluster

21: Joint M-Night @ McEwen FBC, 7 pm

#### SBC and TBC

6: Soul-Winning Commitment Day

13: World Hunger Sunday

### November

#### JUDSON

#### STEWART

4: M-Night @ \_\_\_\_\_ BC, 7pm

18: Prayer Coordinator Mtg., 9 am

#### TRUETT

#### Linkup and Cluster

6-13: Ecuador Mission Trip

#### SBC and TBC

11: TBC Pastor's Conference

12-13: TBC Annual Meeting @ Chattanooga  
Conv. Ctr.

### December

#### JUDSON

6: Christmas Banquet @ Assoc. Building, 7 pm

#### STEWART

7: ?Shop-a-roma @ Nursing Home

16: Prayer Coordinators Mtg, 9am

#### TRUETT

5: Christmas Banquet, FBC, McEwen, 6:30 pm

#### SBC and TBC

1-8: Week of Prayer: International Missions  
Lottie Moon Christmas Offering



## **MEMORIAL**

**FBC, Waverly**  
Nadine McIlwain  
John Rawlings  
Larry Smith  
Juanita Steedly

**Immanuel**  
Shirley Brooks

**Pomona**  
Rita Perez  
Grace Sisco  
Annetta Yates

**Trace Creek**  
Milton Jump  
Bob Russell  
Phil Waggoner

**Slayden**  
Loretta Jarman

**Sylvia**  
Turney Berry  
Mike Cole  
Bernice Guthrie  
Robert Lee  
James Stanely  
Hattie Streetman

## **Constitution**

### **ARTICLE I - NAME**

This Association shall be called the Truett Association of Missionary Baptist.

### **ARTICLE II - PURPOSE**

1. To foster fellowship among the churches cooperating with the Association.
2. To assist the churches in strengthening their programs of enlistment, evangelism, teaching, and training.
3. To encourage churches in the establishment of missions and new churches.
4. To promote these programs of the Tennessee Baptist Convention and the Southern Baptist Convention as it may deem proper.

### **ARTICLE III - MEMBERSHIP**

The Membership of this Association shall be composed of messengers elected by the churches with the Truett Association on the following basis.

1. Each church, regardless of size, may have three (3) messengers.
2. Each church may have one (1) additional messenger for each fifty (50) members or fraction thereof over 100 members.
3. No church may have over ten (10) messengers.
4. All pastors of the churches, officers of the Association and members of the standing committees shall be members of this Association. Churches may be admitted to membership in this Association by a two-thirds majority vote after a petitionary letter has been received by the Credentials Committee. and upon said committee's recommendation.

### **ARTICLE IV - OFFICERS**

The officers of this Association shall be Moderator, Assistant Moderator, Clerk and Treasurer and any other officers that the Association may deem necessary in order to perform the work which needs to be done. The officers shall be elected on the first day of the Association's Annual Meeting, and their tour of duty will begin at the close of the Annual Session. The Moderator may not be eligible for election if he has served two or any part of two terms until at least a year has passed.

### **ARTICLE V - AUTHORITY**

The Association claims no jurisdiction over the churches, and shall exercise no authority over them; however, it shall be the duty of the Association to offer fraternal council to any church in need of the same, upon their request. The Association will reserve the right to refuse to recognize messengers from any church which persists in disorderly practices.

### **ARTICLE VI - EXECUTIVE COMMITTEE**

1. This Association shall have an Executive Board composed of the regular officers of the Association, and other elected officers, Pastors and Chairman of the Standing Committees, along with two elected laymen from each church.
2. This committee shall meet on the fourth Monday night, in October, January, April, July and August. (July shall be the planning meeting). November, January, March, May and June be given to promoting Sunday School, Discipleship Training, Brotherhood, W.M.U. and Stewardship. Only urgent business will be introduced at an emphasis meeting.

### **ARTICLE VII - PARLIAMENTARY PROCEDURE**

1. The By-Laws may be added or the Constitution altered by a two-thirds majority of those present at any regular meeting of the Association. Said recommendations shall be presented to the Executive Committee at the meeting prior to the annual meeting.
2. Robert's Rule of Order shall be the governing procedure.

### **BY-LAWS**

- I. One-half of all messengers attending the Association meeting shall constitute a quorum.
- II. Brethren not messengers of the Association and visiting Brethren invited to sit with the Association may be privileged to discuss but not the right to vote.
- III. The Nominating Committee shall make recommendations for all officers and committee members of Standing Committee.
- IV. The Moderator shall appoint any committees not otherwise provided for.
- V. The Moderator shall have the same privilege, as other members, provided he vacate the chair. While occupying the chair, he may vote only in case of a tie. These rules shall apply to the Assistant Moderator while he is occupying the chair.
- VI. The Association year closes August 31st. Church letters shall be in hand of Clerk by September 15th.

- VII. The Annual Association shall meet Thursday evening after the last Sunday in September.
- VIII. The Executive Board shall be the governing body of the Association between Annual Meetings and shall meet on the fourth Monday night of October, January, April and August with the Moderator given the authority to call special meetings of the Executive Board when needed, upon 7 days advance notice.
- IX. An Associational Calendar of events for the coming year shall be prepared and printed in minutes each year.
- X. All resolutions and reports shall be presented in writing, signed by person offering such report and shall become a part of the permanent record.
- XI. The Clerk and Treasurer shall be paid for services rendered by the amount set by the Budget and Finance Committee.
- XII. The following committees compose the standing committees of this Association
- 1) Promotion - All elected officers compose this committee and the Vice Moderator will serve as Chairman.
  - 2) Missions - This committee shall work with the Director of Missions in various projects in the Association, and shall be composed of five members.
  - 3) Budget and Finance - This committee will have two Pastors, Associational Treasurer and two other laymen.
  - 4) Program - This committee shall have three members, including Associational Clerk.
  - 5) Nominating - This committee shall nominate all officers, standing committees and fill any vacancies, which may occur. This committee shall be composed of five members.
  - 6) Credentials and Doctrine - This committee shall examine Credentials of new Churches and make the necessary recommendation after examination, and also counsel with any church when requested.
- Each committee shall make a report of the work accomplished and of the plans for the future to the Executive Committee at the four (4) Executive Board Committee meetings. Report of Committees to be made to the Executive Committee at the meeting prior to the Annual Associational Meeting.
- XIII. The Moderator shall be ex officio members of all committees, standing or special.
- XIV. The By-Laws may be amended or changed at any time by a majority vote of those present - Executive Committee or Annual Association.

## **WORKING AGREEMENT BETWEEN TRUETT ASSOCIATION OF MISSIONARY BAPTIST AND ASSOCIATION DIRECTOR OF MISSIONS**

**I. POSITION TITLE:** Association Director of Missions will be the official title, hereinafter called DOM of the Truett Association of Missionary Baptist, hereinafter called the Association.

**II. BASIC FUNCTION:** Provide leadership in the work of the Association in the interest of strengthening the cooperative Baptist witness throughout the area.

**III. QUALIFICATIONS:**

- 1) Personal dedication and consistent Christian living.
- 2) A sense of call to mission service.
- 3) Adequate educational preparation, preferably college and seminary training or the equivalent in experience and other training.
- 4) Thorough knowledge of the work of a Southern Baptist Church.
- 5) Knowledge of Association work from personal experience as a DOM or as a participating pastor or other Church leader.
- 6) Reasonable knowledge of Southern Baptist denominational life and willingness to continue to learn.
- 7) Ability to relate effectively to rural and small town Pastors and Churches.

**IV. RESPONSIBILITIES:**

- 4) Work with Association leaders and committees in planning and conducting activities designed to strengthen the churches according to their needs, and to maintain effective mission ministries in the area.
- 5) Lead in planning and coordination of a calendar of Association activities to be presented each year to the annual meeting business session and printed in the minutes of the annual meeting as already provided for the By-Law number of the By-Laws Association.
- 6) Lead in training Association organizational leaders and committees.
- 7) Publish monthly a newsletter of the Association. The newsletter should contain news of interest, highlights of Executive Board action, treasurer's report, upcoming dates of Association activities, and other information and inspiration at the discretion of the DOM.
- 8) Provide counsel and help as reasonably requested by Pastors and Churches.

- 9) Assist in stewardship development in order to undergird the work of the Association and encourage growth in the support of mission causes through the Cooperative Program.
- 10) Assist in maintaining a Biblical evangelism concern in the Association.
- 11) Serve as denomination contact person in the Association relaying quickly news of interest to churches by use of monthly newsletter, reports to the Executive Board, or other communication as considered appropriate by the DOM.
- 12) A report of DOM activities and concerns will be made at each Executive Board meeting and an annual report will be presented by the DOM to the Association Clerk for inclusion in the "Book of Reports" for the annual meeting. The DOM will report regularly to the Missions Department of the TBC.
- 13) The DOM will demonstrate true commitment to the purpose of Association as prescribed in Article II, "Purpose", of the Constitution of the Association.

#### **V. CALL:**

- 1) The call and employment of the DOM be by approval of the Association Executive Board. The Association Executive Board. The Association Missions Committee will serve as search committee when a vacancy of the position occurs and will recommend a nominee for the position to the Executive board.
- 2) The call of the DOM of the Association is a indefinite one. The position of DOM himself, or the Executive Board. The DOM will give the Executive Board thirty (30) days notice if resignation is desired; and the Executive Board will give the DOM sixty (60) days notice if the DOM's resignation is called for.
- 3) The amount of salary and allowances will be worked out and presented for approval annually. It is suggested that the Missions committee and the Budget and Finance committee work together when negotiating a pay package with the DOM.
- 4) Four (4) weeks per year will be allowed, off the field, for revivals, world mission conferences and other such activities. Consideration of the Association calendar is suggested when such activities are scheduled by the DOM.
- 5) The DOM will be allowed two weeks paid vacation each year, with three weeks after five years of service. Vacation time cannot accumulate one year to the next, and payment will not be made for time not taken. Consideration of Association activities is suggested in the scheduling of vacation time by the DOM.
- 6) One day of sick leave with pay shall accumulate for each month of service to a total of ninety (90) days. Sick leave is intended for use by the DOM in case of his illness or that of his immediate family that requires his attention or assistance, including funerals. Sick leave will be forfeited at the time of the DOM's resignation, or dismissal. The Association will not make payment for accumulated sick leave.
- 7) The DOM shall be entitled to receive and keep honorariums from revivals and from supply preaching when the church normally would provide and honorarium.
- 8) The work schedule may vary from week to week as need arises in the Association and Churches.
- 9) Due to the size of the Association and the rural setting of most of our Churches this agreement does not propose to regulate how many times the DOM can supply the pulpit, occasionally or successively in each Church, however, it is intended that the DOM will serve any Church as interim Pastor, but rather assist as requested by the Church in securing pulpit supply so that DOM time and attention can be equitably shared with other churches and Association responsibilities. It is suggested that the DOM compile and maintain a current list of licensed and ordained ministers, and lay speakers in the Association that are available for supply work.
- 10) The employment of the DOM shall be considered full time.
- 11) The Association treasurer will be the payroll officer and the DOM will report to the treasurer when vacation time and sick leave is used, so a record of leave may be maintained.

#### **VI. SUPERVISION:**

- 1) The DOM will be basically "self supervised".
- 2) The Missions committee will serve as an advisory committee to the DOM in all matters pertaining to terms of employment and this agreement.
- 3) The Association Executive Board will direct the Missions committee and the DOM, and the Association will be the final authority pertaining to all matters of the agreement

#### **VII. MISCELLANEOUS:**

- 1) All other working agreements which have been made between this Association and other DOM's are null and void.
- 2) This agreement shall be recorded annually in the Association minutes and may be amended as necessary by the Executive Board or in the annual meetings. Two months notice should be given before amendments are made. The DOM will be informed in writing of any proposed amendments two months before action is taken.

## Truett Baptist Association

### Buffalo, Hurricane Mills

**(615) 729-0821**

**358 Barren Hollow Rd, Hurricane Mills, TN, 37078**

**Fax:**

**Email: plankac@bellsouth.net**

Pastor: Andy Plank, 6280 Piney River Rd, Dickson, TN, 37055 (615) 415-3752

Church Secretary: Mary Cromwell, Buffalo Baptist Church, Hurricane Mills, TN, 37078

Church Treasurer: Charles Mayberry, 57 Mayberry Dr., Hurricane Mills, TN, 37078

Church Clerk: Tiffany Guillory, Buffalo Baptist Church, Hurricane Mills, TN, 37078 (931) 296-4209

Pianist: Lori Pirtle, 80 Bodock Circle, Waverly, TN, 37185

### Cedar Grove, Hurricane Mills

**(931) 296-2492**

**6526 Old Hwy 13, Hurricane Mills, TN, 37078**

**Fax:**

**Email:**

Pastor: Edwin Mullinax, 337 Leader Dr, New Johnsonville, TN, 37134

Minister of Music: Chris Story, 3945 Highway 70 W, Waverly, TN, 37185 (931) 296-3740

Church Secretary: Debbie Story, 3945 Highway 70 W, Waverly, TN, 37185 (615) 446-7244

Chairman of Deacons: Kenny Mullinax, 908 Stag's Leap Lane, New Johnsonville, TN, 37134

Church Treasurer: Letha Page, 313 John Taylor Rd, Waverly, TN, 37185 (931) 296-4104

Church Clerk: Debbie Story, 3945 Highway 70 W, Waverly, TN, 37185 (615) 446-7244

ACP Contact: Debbie Story, 3945 Highway 70 W, Waverly, TN, 37185 (615) 446-7244

Sunday School Director: Kenny Mullinax, 908 Stag's Leap Lane, New Johnsonville, TN, 37134

Association Ex Board Representative: Edwin Mullinax, 337 Leader Dr, New Johnsonville, TN, 37134

Association Ex Board Representative: Evelyn Mullinax, 337 Leader Dr, New Johnsonville, TN, 37134 (931) 535-2894

Discipleship Training Director: Nathan Woods, 344 Leader Dr, New Johnsonville, TN, 37134

Pianist: Stephanie Taylor, 1988 Bakerville Rd, Waverly, TN, 37185

Church VBS Director: Tena Woods, 344 Leader Dr, New Johnsonville, TN, 37134 (931) 296-4264

### Immanuel, McEwen

**(931) 582-3029**

**398 College St, McEwen, TN, 37101**

**Fax:**

**Email: imapest@aol.com**

Pastor: David Deavers, 115 Wilkie St S, McEwen, TN, 37101

Minister of Music: Phillip Petty, 4012 Old Nashville Hwy, McEwen, TN, 37101 (931) 582-3956

Chairman of Deacons: Tim Reese, 850 Brazzle Rd, Waverly, TN, 37185 (931) 296-4872

Church Treasurer: Gladys Gill, Immanuel Baptist Church, McEwen, TN, 37101 (931) 582-3029

Church Clerk: Helen Taylor, 306 Saint Patrick St, McEwen, TN, 37101

ACP Contact: David Deavers, 115 Wilkie St S, McEwen, TN, 37101

Sunday School Director: Gary Curtis, 187 Brown Town Rd, Waverly, TN, 37185 (931) 296-4323

Association Ex Board Representative: David Deavers, 115 Wilkie St S, McEwen, TN, 37101

Discipleship Training Director: David Deavers, 115 Wilkie St S, McEwen, TN, 37101

Pianist: Leona Deavers, Immanuel Baptist Church, McEwen, TN, 37101 (931) 582-3029

Church VBS Director: Leona Deavers, Immanuel Baptist Church, McEwen, TN, 37101 (931) 582-3029

WMU Church Director: Leona Deavers, Immanuel Baptist Church, McEwen, TN, 37101 (931) 582-3029

Church Library Team Leader: Miranda Deavers, Immanuel Baptist Church, McEwen, TN, 37101 (931) 582-3029

|   |  |                       |
|---|--|-----------------------|
| <b>Liberty, White Bluff</b>   |  | <b>(615) 797-5151</b> |
| <b>1031 White Bluff Rd, White Bluff, TN, 37187</b>  |  | <b>Fax:</b>           |
| <b>Email:</b>   |  |                       |
| Pastor: Larry Cochran, 596 Tidwell Rd, Bon Aqua, TN, 37025                                    |  |                       |
| Minister of Music: Brian Smith, PO Box 27, White Bluff, TN, 37187                             |  |                       |
| Church Secretary: Vanessa Flowers, 1915 Park St, White Bluff, TN, 37187                       |  | (615) 479-2098        |
| Minister of Youth: Dean Morgan, 1278 Spencer Mill Rd, Burns, TN, 37029                        |  | (615) 740-7953        |
| Minister of Children: Dean Morgan, 1278 Spencer Mill Rd, Burns, TN, 37029                     |  | (615) 740-7953        |
| Church Treasurer: Stephanie Murrell, Liberty Baptist Church, White Bluff, TN, 37187           |  | (615) 797-5151        |
| Church Finance Committee Chairman: Mark Burns, Liberty Baptist Church, White Bluff, TN, 37187 |  | (615) 797-5151        |
| Church Clerk: Vanessa Flowers, 1915 Park St, White Bluff, TN, 37187                           |  | (615) 479-2098        |
| ACP Contact: Vanessa Flowers, 1915 Park St, White Bluff, TN, 37187                            |  | (615) 479-2098        |
| Sunday School Director: Paul Flowers, Liberty Baptist Church, White Bluff, TN, 37187          |  | (615) 797-9455        |
| Association Ex Board Representative: Larry Cochran, 596 Tidwell Rd, Bon Aqua, TN, 37025       |  |                       |
| Organist: Patricia Hess, 2165 Petty Rd, Charlotte, TN, 37036                                  |  | (615) 789-9264        |
| Church VBS Director: Vanessa Flowers, 1915 Park St, White Bluff, TN, 37187                    |  | (615) 479-2098        |
| Church Womens Ministry Director: Patsy Cochran, 596 Tidwell Rd, Bon Aqua, TN, 37025           |  |                       |
| Prayer Ministry Coordinator: Karen Vaughn, Liberty Baptist Church, White Bluff, TN, 37187     |  | (615) 797-5151        |
| Minister of Missions: Stephanie Murrell, Liberty Baptist Church, White Bluff, TN, 37187       |  | (615) 797-5151        |
| Minister of Adults: Calvin Whitaker, 102 Cage Circle, Dickson, TN, 37055                      |  | (615) 446-6458        |
| Senior Adult Coordinator: Patricia Hess, 2165 Petty Rd, Charlotte, TN, 37036                  |  | (615) 789-9264        |
| <b>McEwen First, McEwen</b>   |  | <b>(931) 582-3027</b> |
| <b>75 Long St W, McEwen, TN, 37101</b>  |  | <b>Fax:</b>           |
| <b>Email: fbcm@waverly.net</b>  |  |                       |
| Pastor: Jonathan Witt, 336 Patterson Circle, McEwen, TN, 37101                                |  |                       |
| Minister of Music: Pam Simpson, 542 Parrish Ln, McEwen, TN, 37101                             |  |                       |
| Chairman of Deacons: Jerry Cathey, 133 Dylark, Waverly, TN, 37185                             |  |                       |
| Church Treasurer: Jerry Cathey, 133 Dylark, Waverly, TN, 37185                                |  |                       |
| Church Finance Committee Chairman: Kathleen Lee, PO Box 261, McEwen, TN, 37101                |  | (931) 582-6127        |
| Church Clerk: Sharon Curtis, 676 Poplar Grove Rd, McEwen, TN, 37101                           |  | (931) 582-3092        |
| Sunday School Director: Sonya Cathey, 133 Dylark, Waverly, TN, 37185                          |  | (931) 296-7340        |
| Association Ex Board Representative: Sue Smith, 75 Long St W, McEwen, TN, 37101               |  |                       |
| Discipleship Training Director: Oliver Lee, 57 Florence St, McEwen, TN, 37101                 |  |                       |
| Organist: Tracy White, 239 South St, McEwen, TN, 37101  |  | (931) 582-8565        |
| Pianist: Pam Simpson, 542 Parrish Ln, McEwen, TN, 37101                                       |  | (931) 582-3722        |
| Childrens Choir Coordinator: Pam Simpson, 542 Parrish Ln, McEwen, TN, 37101                   |  | (931) 582-3722        |
| Church VBS Director: Sonja Cathey, 75 Long St W, McEwen, TN, 37101                            |  |                       |
| WMU Church Director: Retha Johnson, 23 Railroad St S, McEwen, TN, 37101                       |  |                       |
| Prayer Ministry Coordinator: Margie Gunn, 7865 Little Hurricane Creek Rd, McEwen, TN, 37101   |  | (931) 582-3695        |
| Church CP/Stewardship Chair: Kathleen Lee, PO Box 261, McEwen, TN, 37101                      |  | (931) 582-6127        |
| Minister of Missions: Carey Simpson, 542 Parrish Ln, McEwen, TN, 37101                        |  | (931) 582-3722        |
| Other Paid Church Staff: Debbie Harbison, McEwen First Baptist Church, McEwen, TN, 37101      |  |                       |

**Oak Grove, McEwen****2182 Mount Zion Rd, McEwen, TN, 37101****(931) 582-3138****Fax:****Email:**

|   |                |
|---|----------------|
| Pastor: Reece Cochran, 1485 Mount Zion Rd, McEwen, TN, 37101                              |                |
| Minister of Music: Tim Norville, Reece Cochran, McEwen, TN, 37101                         | (931) 582-3138 |
| Chairman of Deacons: Danny Jackson, 241 May Ln, McEwen, TN, 37101                         | (931) 582-3863 |
| Church Treasurer: Lula Tester, 1005 Peach Creek Rd, McEwen, TN, 37101                     | (931) 582-3388 |
| Church Clerk: Jane Townsend, 5902 Erin Rd, McEwen, TN, 37101                              | (931) 582-3809 |
| ACP Contact: Regena Jackson, 241 May Ln, McEwen, TN, 37101                                | (931) 582-3863 |
| Sunday School Director: Danny Jackson, 241 May Ln, McEwen, TN, 37101                      | (931) 582-3863 |
| Association Ex Board Representative: Danny Jackson, 241 May Ln, McEwen, TN, 37101         | (931) 582-3863 |
| Association Ex Board Representative: Regena Jackson, 241 May Ln, McEwen, TN, 37101        | (931) 582-3863 |
| Association Ex Board Representative: Reece Cochran, 1485 Mount Zion Rd, McEwen, TN, 37101 |                |
| Association Ex Board Representative: Mable Cochran, 1485 Mount Zion Rd, McEwen, TN, 37101 | (931) 582-3138 |
| Discipleship Training Director: Danny Jackson, 241 May Ln, McEwen, TN, 37101              | (931) 582-3863 |
| Pianist: Regena Jackson, 241 May Ln, McEwen, TN, 37101                                    | (931) 582-3863 |
| Praise Band Leader: Tim Norville, Reece Cochran, McEwen, TN, 37101                        | (931) 582-3138 |
| Church VBS Director: Penny Norville, Reece Cochran, McEwen, TN, 37101                     | (931) 209-6755 |
| Church Mens Ministry Director: Danny Jackson, 241 May Ln, McEwen, TN, 37101               | (931) 582-3863 |
| Church RA Director: Tim Norville, Reece Cochran, McEwen, TN, 37101                        | (931) 582-3138 |
| WMU Church Director: Penny Norville, Reece Cochran, McEwen, TN, 37101                     | (931) 209-6755 |
| Church Library Team Leader: Penny Norville, Reece Cochran, McEwen, TN, 37101              | (931) 209-6755 |

**Pomona, Dickson****974 Pomona Rd, Dickson, TN, 37055****(615) 446-3018****Fax:****Email:**

|   |                |
|---|----------------|
| Pastor: Aaron Satchwill, 1291 Little Bartons Creek Rd, Cumberland Furnace, TN, 37051              | (615) 446-3018 |
| Minister of Music: Terry Bright, 408 W College St, Dickson, TN, 37055                             |                |
| Chairman of Deacons: Donnie Weiss, 209 Lee Rd, Dickson, TN, 37055                                 | (615) 446-4174 |
| Church Treasurer: Donnie Weiss, 209 Lee Rd, Dickson, TN, 37055                                    | (615) 446-4174 |
| Church Finance Committee Chairman: Johnny Donegan, 7111 Timberlane Dr, Fairview, TN, 37062        |                |
| Church Clerk: Wilma Donegan, 7111 Timberlane Dr, Fairview, TN, 37062                              | (615) 530-3932 |
| ACP Contact: Wilma Donegan, 7111 Timberlane Dr, Fairview, TN, 37062                               | (615) 530-3932 |
| Sunday School Director: Donnie Weiss, 209 Lee Rd, Dickson, TN, 37055                              | (615) 446-4174 |
| Organist: Arlene Byars, 204 Gaskins Rd, Dickson, TN, 37055  | (615) 740-5259 |
| Pianist: Donna Hale, 1459 Pomona Rd, Dickson, TN, 37055   | (615) 446-6066 |
| Pianist: Arlene Byars, 204 Gaskins Rd, Dickson, TN, 37055   | (615) 740-5259 |
| Childrens Choir Coordinator: Arlene Byars, 204 Gaskins Rd, Dickson, TN, 37055                     | (615) 740-5259 |
| Church VBS Director: Arlene Byars, 204 Gaskins Rd, Dickson, TN, 37055                             | (615) 740-5259 |
| Church Mens Ministry Director: Aaron Satchwill, 1291 Little Bartons Creek Rd, Cumberland Furnace, | (615) 446-3018 |

|   |  |                            |
|---|--|----------------------------|
| <b>Slayden, Cumberland Furnace</b>  |  | <b>(615) 219-2508</b>      |
| <b>3115 Slayden Marion Rd, Cumberland Furnace, TN, 37051</b>                                      |  | <b>Fax:</b>                |
| <b>Email:</b>   |  |                            |
| Pastor: Dwayne Smith, 535 Old Highway 48, Clarksville, TN, 37040                                  |  | (931) 553-8047             |
| Minister of Music: Neal Westerman, 680 Tucker Rd, Dickson, TN, 37055                              |  | (615) 789-5630             |
| Church Secretary: Sandra Jarman, 1655 Little Barton's Creek Rd, Cumberland Furnace, TN, 37051     |  | (615) 763-2551             |
| Chairman of Deacons: Terry Anderson, 1071 Little Barton's Creek Rd, Cumberland Furnace, TN,       |  | (615) 763-2017             |
| Church Treasurer: Candy Foriest, 2004 Slayden Marion Road, Cumberland Furnace, TN, 37051          |  | (615) 763-0176             |
| Church Clerk: Sandra Jarman, 1655 Little Barton's Creek Rd, Cumberland Furnace, TN, 37051         |  | (615) 763-2551             |
| ACP Contact: Sandra Jarman, 1655 Little Barton's Creek Rd, Cumberland Furnace, TN, 37051          |  | (615) 763-2551             |
| Sunday School Director: Joe Underwood, 1580 Halliburton Rd, Vanleer, TN, 37181                    |  | (615) 763-6305             |
| Association Ex Board Representative: Hazel Brymer, 1445 Little Barton's Creek Rd, Cumberland      |  | (615) 763-2293             |
| Discipleship Training Director: Johnny Foriest, 2004 Slayden Marion Road, Cumberland Furnace, TN, |  | (615) 763-0176             |
| Pianist: Glee Smith, 535 Old Highway 48, Clarksville, TN, 37040                                   |  |                            |
| Church VBS Director: Barbara Ellis, 345 Wall Rd, Cunningham, TN, 37052                            |  | (931) 387-3212             |
| Church RA Director: Terry Anderson, 1071 Little Barton's Creek Rd, Cumberland Furnace, TN, 37051  |  | (615) 763-2017             |
| WMU Church Director: Barbara Ellis, 345 Wall Rd, Cunningham, TN, 37052                            |  | (931) 387-3212             |
| WMU Missions Leader churchwide: Joanna Hargrove, 1298 Collins Rd, Vanleer, TN, 37181              |  | (615) 763-6129             |
| WMU Missions Leader churchwide: Sandra Jarman, 1655 Little Barton's Creek Rd, Cumberland          |  | (615) 763-2551             |
| <b>Sylvia, Dickson</b>  |  | <b>(615) 789-4532</b>      |
| <b>1415 Old Sylvia Rd, Dickson, TN, 37055</b>   |  | <b>Fax: (615) 789-6622</b> |
| <b>Email: liane@sylviabaptist.com</b>   |  |                            |

|   |                |
|---|----------------|
| Pastor: Clark Brown, 116 Beechwood Dr, Burns, TN, 37029                               | (615) 789-4532 |
| Minister of Music: Frank Daugherty, 7615 Union Valley Rd, Fairview, TN, 37062         | (615) 799-9820 |
| Church Secretary: Liane Keaton, 2115 Maysville Rd, Dickson, TN, 37055                 | (615) 789-4532 |
| Minister of Youth: David Davidson, 909 Nancy Shawl Rd, Dickson, TN, 37055             | (615) 789-4532 |
| Chairman of Deacons: Butch Williams, 473 Sylvis Rd, Dickson, TN, 37055                |                |
| Church Treasurer: Danny Keaton, 2115 Maysville Rd, Dickson, TN, 37055                 | (615) 789-9337 |
| Church Finance Committee Chairman: Ray Edwards, 1744 Hayshed Rd, Charlotte, TN, 37036 |                |
| Church Clerk: Sandra Storey, Sylvia Baptist Church, Dickson, TN, 37055                | (615) 789-5048 |
| ACP Contact: Liane Keaton, 2115 Maysville Rd, Dickson, TN, 37055                      | (615) 789-4532 |
| Sunday School Director: Larry Storey, 1420 Hayshed Rd, Charlotte, TN, 37036           | (615) 789-5048 |
| Discipleship Training Director: Dan Hicks, 2285 CCC Rd, Dickson, TN, 37055            |                |
| Organist: Kathy Canaday, 511 Sycamore Rd, Dickson, TN, 37055                          | (615) 740-1537 |
| Praise Band Leader: Frank Daugherty, 7615 Union Valley Rd, Fairview, TN, 37062        | (615) 799-9820 |
| Church VBS Director: Liane Keaton, 2115 Maysville Rd, Dickson, TN, 37055              | (615) 789-4532 |
| Church Mens Ministry Director: Dan Hicks, 197 Double Ridge Dr, Charlotte, TN, 37036   | (615) 789-3814 |
| Church RA Director: Dan Hicks, 197 Double Ridge Dr, Charlotte, TN, 37036              | (615) 789-3814 |
| WMU Church Director: Sandra Storey, Sylvia Baptist Church, Dickson, TN, 37055         | (615) 789-5048 |
| Prayer Ministry Coordinator: Joyce Turman, 1429 Hayshed Rd, Charlotte, TN, 37036      | (615) 789-5900 |
| Church Library Team Leader: Elaine Griffin, 107 Poplar St, Dickson, TN, 37055         | (615) 417-3816 |



|  |  |                          |
|--|--|--------------------------|
| <b>Three Rivers, Waverly</b>   |  | <b>(931) 209-9439</b>    |
| <b>615 West Main St, Waverly, TN, 37185</b>  |  | <b>Fax:</b>              |
| <b>Email:</b>  |  |                          |
| Church Secretary: Parks Chastain, 310 N. Maple St., Waverly, TN, 37185                             |  |                          |
| Chairman of Deacons: Lee Aldridge, 436 Spann Loop, Hurricane Mills, TN, 37078                      |  | (931) 296-0881           |
| Church Treasurer: Parks Chastain, 310 N. Maple St., Waverly, TN, 37185                             |  |                          |
| Church Finance Committee Chairman: Lee Aldridge, 436 Spann Loop, Hurricane Mills, TN, 37078        |  | (931) 296-0881           |
| Church Clerk: Parks Chastain, 310 N. Maple St., Waverly, TN, 37185                                 |  |                          |
| ACP Contact: Parks Chastain, 310 N. Maple St., Waverly, TN, 37185                                  |  |                          |
| Pianist: Beth Rymer, 154 Fowler Cemetery Ln., Hurricane Mills, TN, 37078                           |  | (931) 296-3001           |
| WMU Church Director: Jean Aldridge, 436 Spann Loop, Hurricane Mills, TN, 37078                     |  |                          |
| Church Administrative Director: Lee Aldridge, 436 Spann Loop, Hurricane Mills, TN, 37078           |  | (931) 296-0881           |
| <b>Trace Creek, New Johnsonville</b>   |  | <b>(931) 535-2641</b>    |
| <b>1320 Broadway Ave, New Johnsonville, TN, 37134</b>  |  | <b>Fax: 931-535-3745</b> |
| <b>Email: tracecreek@tds.net</b>   |  |                          |
| Pastor: Mark Warren, 1221 Timberwood Dr, New Johnsonville, TN, 37134                               |  | (931) 535-2641           |
| Minister of Music: LeaAnne Jehnzen, 299 Powers Ave, Waverly, TN, 37185                             |  |                          |
| Church Secretary: Kayla Perry, 184 S. Buchanan Rd, Waverly, TN, 37185                              |  | (931) 535-2641           |
| Minister of Youth: Tom Jehnzen, 299 Powers Blvd, Waverly, TN, 37185                                |  |                          |
| Minister of Children: Tom Jehnzen, 299 Powers Blvd, Waverly, TN, 37185                             |  |                          |
| Chairman of Deacons: Larry Holland, 925 Woodland Dr, New Johnsonville, TN, 37134                   |  |                          |
| Church Treasurer: Kayla Perry, 184 S. Buchanan Rd, Waverly, TN, 37185                              |  | (931) 535-2641           |
| Church Clerk: Karen Brown, 723 Woodlawn Dr, New Johnsonville, TN, 37134                            |  |                          |
| ACP Contact: Kayla Perry, 184 S. Buchanan Rd, Waverly, TN, 37185                                   |  | (931) 535-2641           |
| Sunday School Director: Jodi Prince, 325 James Ln, New Johnsonville, TN, 37134                     |  |                          |
| Discipleship Training Director: Gerald Bowker, 4470 Old State Route 1, New Johnsonville, TN, 37134 |  |                          |
| Organist: Betsy Lewis, PO Box 145, New Johnsonville, TN, 37134                                     |  |                          |
| Pianist: Jodi Prince, 325 James Ln, New Johnsonville, TN, 37134                                    |  |                          |
| Church VBS Director: Angie Bowker, 4470 Old State Route 1, New Johnsonville, TN, 37134             |  |                          |
| WMU Church Director: Lee Lowe, 840 Asbury Drive, New Johnsonville, TN, 37134                       |  | 931-535-3477             |
| Minister of Adults: Diane Eason, PO Box 202, New Johnsonville, TN, 37134                           |  | (931) 535-2017           |
| Other Paid Church Staff: Kay Story, Trace Creek Baptist Church, New Johnsonville, TN, 37134        |  | (931) 535-2641           |
| <b>United Missionary Church, McEwen</b>  |  | <b>(931) 582-3262</b>    |
| <b>5261 Highway 70 W, McEwen, TN, 37101</b>  |  | <b>Fax:</b>              |
| <b>Email:</b>  |  |                          |
| Pastor: L J Hatcher, 2631 Deer Creek Rd, McEwen, TN, 37101   |  |                          |
| Church Treasurer: Leon Johnson, 3128 Old Blacktop Rd, McEwen, TN, 37101                            |  |                          |
| Church Clerk: Lynn Mansfield, 709 Mount Zion Ln, McEwen, TN, 37101                                 |  | (931) 582-4314           |
| Sunday School Director: Iona Tidwell, 10436 Ligon Love Rd, Bon Aqua, TN, 37025                     |  |                          |
| Pianist: Lynn Mansfield, 709 Mount Zion Ln, McEwen, TN, 37101                                      |  | (931) 582-4314           |
| Church VBS Director: Iona Tidwell, 10436 Ligon Love Rd, Bon Aqua, TN, 37025                        |  |                          |
| WMU Missions Leader churchwide: Iona Tidwell, 10436 Ligon Love Rd, Bon Aqua, TN, 37025             |  |                          |

**Vanleer, Vanleer****311 High St, Vanleer, TN, 37181****Email: pcorbin@tennsco.net****(615) 516-3211****Fax: (615) 326-0725**

|   |                |
|---|----------------|
| Pastor: Phil Corbin, Vanleer Baptist Church, Dickson, TN, 37055                     | (615) 326-0637 |
| Church Secretary: Nancy Fowler, 1000 Jackson Lane, Charlotte, TN, 37036             | 615-789-4958   |
| Chairman of Deacons: John Singleton, 1765 Williamson Branch Rd, Vanleer, TN, 37181  | (931) 764-0125 |
| Church Treasurer: Patricia Singleton, 1765 Williamson Branch Rd, Vanleer, TN, 37181 | (931) 764-0125 |
| Church Clerk: Nancy Fowler, 1000 Jackson Lane, Charlotte, TN, 37036                 | 615-789-4958   |
| ACP Contact: Phil Corbin, Vanleer Baptist Church, Dickson, TN, 37055                | (615) 326-0637 |
| Sunday School Director: Phil Corbin, Vanleer Baptist Church, Dickson, TN, 37055     | (615) 326-0637 |
| Pianist: Wanda Williams, 105 High St, Vanleer, TN, 37181                            | (615) 763-0279 |
| WMU Church Director: Nancy Fowler, 1000 Jackson Lane, Charlotte, TN, 37036          | 615-789-4958   |

**Waverly First, Waverly****300 E Main St, Waverly, TN, 37185****Email:****(931) 296-2348****Fax: (931) 296-2397**

|  |                |
|--|----------------|
| Pastor: Richard Bray, 8 Bush Court, Waverly, TN, 37185                                   | 9312962348     |
| Minister of Music: Steve Winstead, 15 Winstead Dr, McEwen, TN, 37101                     | (931) 582-3535 |
| Church Secretary: Debbie Frazier, 106 Friel Dr, Waverly, TN, 37185                       | (931) 296-2348 |
| Minister of Youth: Johnathan Baker, PO Box 555, Waverly, TN, 37185                       | (931) 209-0846 |
| Minister of Preschool: Sheryl Melton, 815 Woodlawn Dr, New Johnsonville, TN, 37134       |                |
| Chairman of Deacons: Joel Clements, 203 Dogwood Circle, Waverly, TN, 37185               | (615) 535-7277 |
| Church Treasurer: Pete Oldham, 125 Spring Creek Ln, Waverly, TN, 37185                   | (931) 296-9259 |
| Church Finance Committee Chairman: Louis Anderson, 138 Cedar Hill Dr, Waverly, TN, 37185 | (931) 296-4656 |
| Church Clerk: Wanda Oliphant, 101 Circle Dr, Waverly, TN, 37185                          | (931) 296-9251 |
| ACP Contact: Debbie Frazier, 106 Friel Dr, Waverly, TN, 37185                            | (931) 296-2348 |
| Sunday School Director: Ronald Harned, PO Box 186, Waverly, TN, 37185                    | (931) 296-3772 |
| Association Ex Board Representative: L M Sceals, 102 Stewart Ln, Waverly, TN, 37185      | (931) 296-3194 |
| Organist: Billie Northcut, 811 W Main St, Waverly, TN, 37185                             | (931) 296-1685 |
| Pianist: Carla Clements, 203 Dogwood Circle, Waverly, TN, 37185                          | (931) 296-4200 |
| Praise Band Leader: Steve Winstead, 15 Winstead Dr, McEwen, TN, 37101                    | (931) 582-3535 |
| Childrens Choir Coordinator: Amy Roberts, 145 Langford Rd, Waverly, TN, 37185            | (931) 296-4643 |
| Church VBS Director: Laural Baker, PO Box 555, Waverly, TN, 37185                        |                |
| Church RA Director: Roger Betty, 3461 Ogden Rd, McEwen, TN, 37101                        |                |
| WMU Church Director: Melanie Jones, 596 Williams Hollow Rd, McEwen, TN, 37101            | 9312964264     |
| Church Library Team Leader: Kathy Hickerson, 3562 W Trace Creek, Waverly, TN, 37185      |                |
| Minister of Adults: Barbara Sceals, 102 Stewart Lane, Waverly, TN, 37185                 |                |
| Other Paid Church Staff: Sheryl Melton, 815 Woodlawn Dr, New Johnsonville, TN, 37134     |                |